

# INDRIVETEC AG

"bricks up" flexible energy storage systems

"BRICK" IDT-Energy Management System Hardware

## IDT Power Plant Controller

Power Supply with UPS Option

Robust Industrial Controller

Fire and Intrusion detection

HVAC control

Flexible I/O Configuration

Safe IT setup for  
Critical Infrastructure

Optional Enclosure with  
Transparent or Stainless Door



TSO/DSO interface optional

Trading interface

Customer Interface

Service Interface

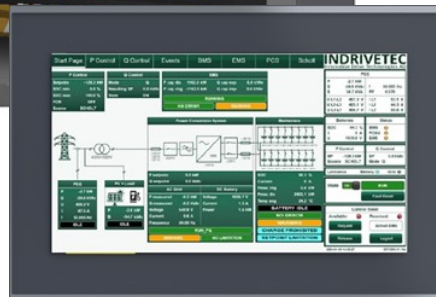
Certified Power Plant Controller

Multiple Unit Controllers

Highspeed Interface to  
IDT Grid Measurement Box  
and IDT Power Unit Controller

HMI for local and remote access

Role-based multi-user access



### Key features:

proven all-in-one system design

compliant with multiple regulations and standards

for outdoor, indoor and cabinet use

leading control and communication technologies

large variety of interfaces, protocols and I/Os

comfortable installation, maintenance and use

easy system integration and extension

Various on-grid and off-grid uses cases

FCR, aFRR, Peak-Shaving, Island Mode, Reactive Power Supply/Compensation

# INDRIVETEC AG

## "BRICK" IDT-Energy Management System Hardware

### Technical data

System Type	IDT PPC Box	IDT PPC Cabinet
<b>AC connection</b>		
Nominal AC Power	240 W	
AC nominal voltage	230 V/ 110V, 1~	
Grid frequency	50 Hz / 60Hz	
AC operating current	1 A	
AC maximum current	3 A	
<b>DC connection</b>		
Backup battery option	24 VDC	
<b>General data</b>		
Enclosure material	Stainless steel	Powder-coated steel
Enclosure door material	Stainless steel, optional polycarbonate window	Powder-coated steel, optional HMI window
Dimensions W x H x D	500 x 700 x 250 mm	600 x 1800 x 800 mm
Mounting plate material	Zinc-coated steel	Zinc-coated steel
Mounting plate dimensions W x H X D	490 x 660 x 1,5 mm	490 x 660 x 1,5 mm
Weight	32 kg	152 kg
Cooling / Heating	natural convection	natural convection, cabinet heating
Relative humidity	0% to 100%	0% to 100%
Operation temperature (without display)	-30°C ... +60°C	-30°C ... +60°C
Operation temperature (display)	0°C ... +60°C	0°C ... +60°C
Ingress protection	IP65	IP54
<b>System components</b>		
EMS (per system)	1	
Power plant controller (per system)	1	
IDT Grid Measurement Box (per system)	1	
Unit controller (per system)	up to 15	
Transformer (per unit controller)	1 (max. three-winding)	
PCS (per unit controller)	up to 2	
BMS (per unit controller)	up to 2	
<b>Interfaces</b>		
Customer interface	Profinet, OPC UA, Modbus/TCP, HTML5, FTP, VPN	
IDT Service interface	TCP/IP VPN	
TSO/DSO interface	IEC 60870-5-101, IEC 60870-5-104, (IEC 61850)	
Trading interface	Modbus/TCP, OPC UA, IEC 60870-5-104, VHPready	
PCS, BMS	Profinet, Modbus/TCP, Profibus, CAN A/B, CANopen, RS 232/422/485, Analog I/O (0...10V, 0/4...20mA), Digital I/O	
IDT GMB, Unit controllers	Fastbus (up to 2000m distance)	
<b>Standards, Certificates, Approvals</b>		
Grid codes	VDE AR 4105, VDE AR 4110, VDE AR 4120, EN50549	
EMC	IEC 61000	
Components	IEC/CE/UL	

Technical data are subject to change, even for reasons on country-specific deviations. Indrivetec assumes no liability for errors and omissions.

